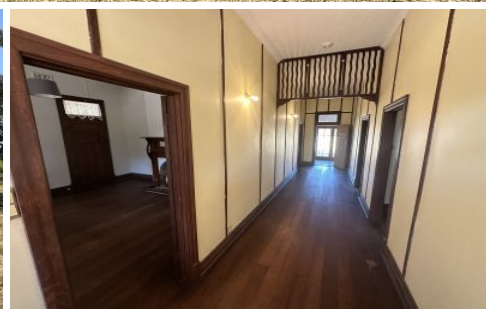




York Estate Agents



1164 Grass Valley South Road Northam WA

3 1 3

Situated between York and Northam in Throssell "The Cottage" has just come on to the market for your inspection.

Boasting an original Farm house in excellent condition on 3.3 acres of land surrounded by peace and quiet (no neighbouring houses) and just listen to the birdlife.

Features include-

Grand entrance hallway.

3 enormous bedrooms (one with feature fireplace).

1 Bathroom

Extra large lounge room with feature fireplace.

Ducted airconditioning.

High ceilings and Jarrah Floorboards.

Cooling verandahs.

Peaceful rural views and lovely large established shady

Type : Rural

Price : \$589000

Land Size : 3.3 Acres

View : <https://www.yorkfn.com.au/sale/wa/east/northam/residential/rural/8140073>



Michael Bawden
0403 268 158

[For full version visit the website](https://www.yorkfn.com.au)

<https://www.yorkfn.com.au>